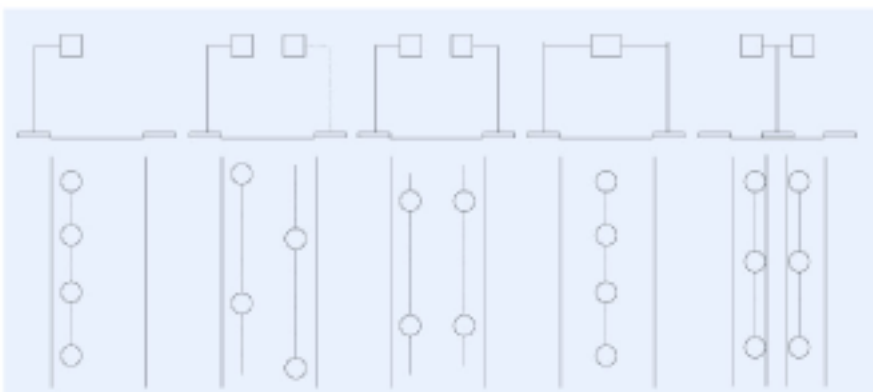
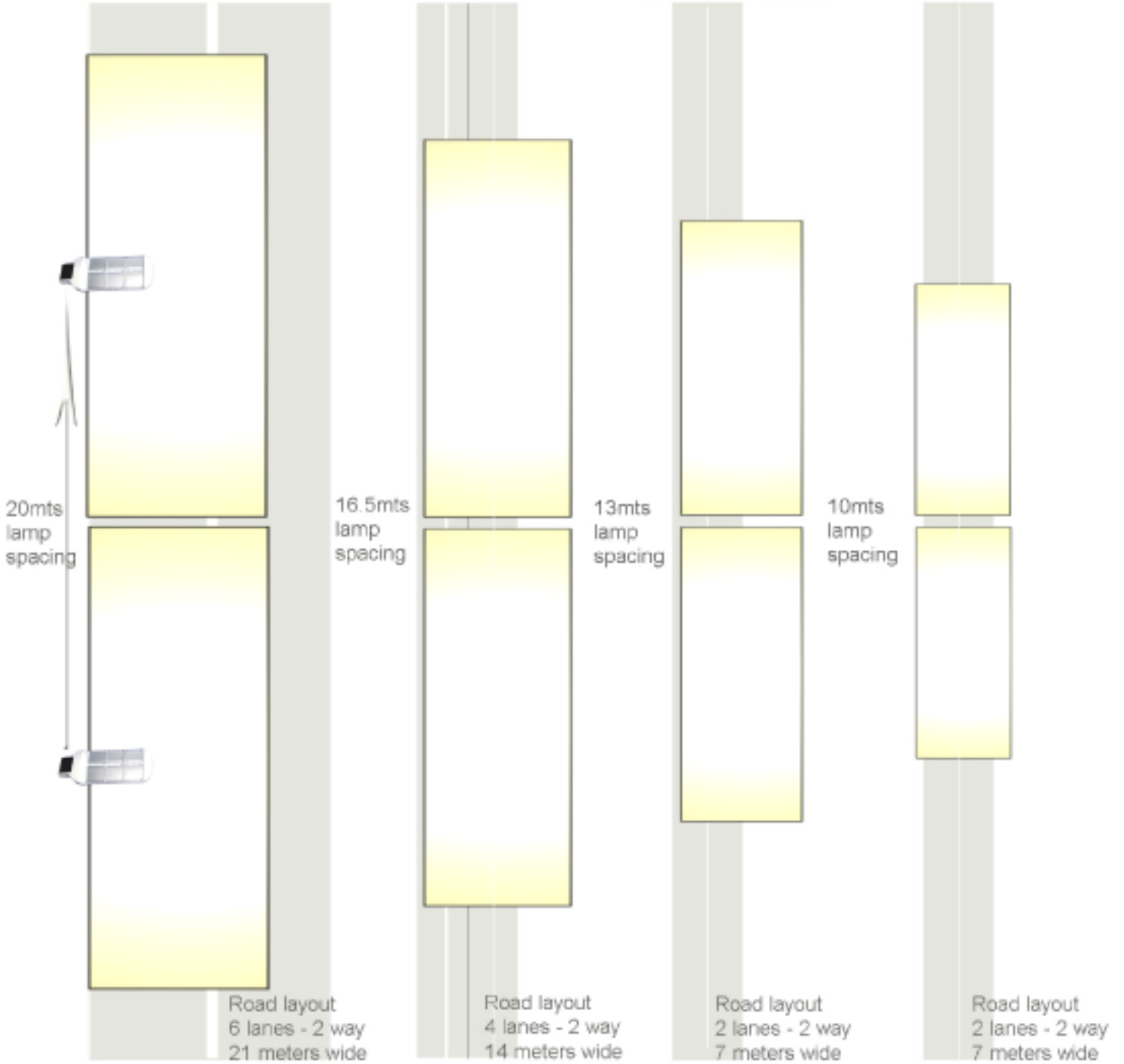


at 12 mts height
 Beam pattern 40x16mts
 GHS6 -LUX level 20
 GHS4 -LUX level 13
 GHS2 -LUX level 6
 GHS28 -LUX level 3

at 10 mts height
 Beam pattern 33x13mts
 GHS6 -LUX level 28
 GHS4 -LUX level 18
 GHS2 -LUX level 9
 GHS28 -LUX level 4.5

at 8 mts height
 Beam pattern 26x10mts
 GHS6 -LUX level 45
 GHS4 -LUX level 30
 GHS2 -LUX level 15
 GHS28 -LUX level 7.5

at 6 mts height
 Beam pattern 20x8mts
 GHS6 -LUX level 80
 GHS4 -LUX level 53
 GHS2 -LUX level 26
 GHS28 -LUX level 13



Suggested street light positions

1. Unilateral
2. Bilateral staggered
3. Bilateral opposite
4. Central suspended
5. Central bilateral